

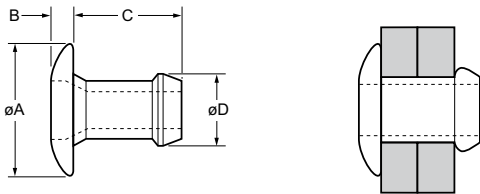


For installation information please refer to the tooling overview and manuals on our website.
 Pour les conditions de pose, merci de vous référer à la description de l'outil et aux manuels disponibles sur notre site Web.
 Angaben zur Verarbeitung entnehmen Sie bitte der Geräteübersicht und den Betriebsanleitungen auf unserer Website.
 Per informazioni sull'installazione preghiamo consultare i manuali e la panoramica degli attrezzi sul nostro sito web.
 Para ver información sobre máquinas de colocación, consulte nuestra página web, apartados visión general de máquinas y manuales.

English	Français	Deutsch	Italiano	Español
Dome head	Tête plate	Flachrundkopf	Testa tonda	Cabeza alomada
Aluminium alloy* (5 % Mg)	Alliage d'aluminium* (5% Mg)	Aluminium* (5 % Mg)	Lega di alluminio* (5% Mg)	Aluminio* (5% Mg)
Natural	Brut	Blank	Nessuna finitura	Natural

*: BS 1473 5056A DIN 1725 AlMg5 Werkstoff 3.3555

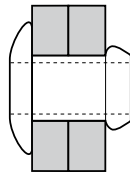
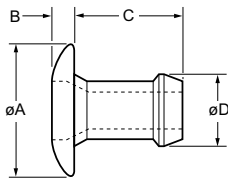
Option: for 2.5 % Mg aluminium alloy replace part no. 01801 with 01861 / pour 2.5 % Mg alliage d'aluminium remplacer la série 01801 par 01861 / für 2.5 % Mg Aluminium-Legierung ersetzen Sie 01801 durch 01861 / per 2.5 % Mg lega di alluminio sostituire 01801 con 01861 / con Aluminio (2,5 % de Mg) cambiar 01801 por 01861



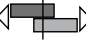



ø	Ø		Ø		± 0.4	B	C	øD	kN ¹⁾	kN ¹⁾	Fasteners per pod / Nombre de rivets par chargeur / Niete pro Magazin / Rivetti per caricatore / Uds./carga	Part No/ref
	min.	max.	min.	max.								
2.4 (3/32")	1.14	2.42	2.36	2.44	± 0.4	0.89	3.98	2.35	0.2	0.4	64	01801-00304
	2.15	3.43					5.00				52	01801-00306
	3.17	4.45					6.02				44	01801-00308
	4.19	5.47					7.04				38	01801-00310
	5.20	6.48					8.05				34	01801-00312
	6.22	7.50					9.07				30	01801-00314
	6.73	8.00					9.57				28	01801-00315
	7.24	8.51					10.08				27	01801-00316
	7.75	9.02					10.59				26	01801-00317
3.2 (1/8")	0.64	1.91	3.26	3.34	± 0.4	0.99	3.86	3.14	0.7	1.3	59	01801-00403
	1.14	2.42					4.37				58	01801-00404
	1.65	2.87					4.87				50	01801-00405
	2.15	3.43					5.39				48	01801-00406
	3.17	4.45					6.41				42	01801-00408
	4.19	5.47					7.42				37	01801-00410
	5.20	6.48					8.44				33	01801-00412
	6.22	7.50					9.45				29	01801-00414
	7.24	8.51					10.46				26	01801-00416

all dimensions in mm / en millimètres / alle Maße in mm / in millimetri / en milímetros

1) typical values / valeurs moyennes / typische Werte / Valori tipici / resistencias máximas recomendadas



ø					øA	B	C	øD			Fasteners per pod / Nombre de rivets par chargeur / Niete pro Magazin / Rivetti per caricatore / Uds./carga	Part No/ref
	min.	max.	min.	max.								
4.0 (5/32")	1.57	2.93	3.97	4.04	7.9	0.99	4.91	3.88	1.1	1.7	52	01801-00505
	2.15	3.43					5.41				49	01801-00506
	2.66	3.94					5.92				44	01801-00507
	3.68	4.96					6.94				39	01801-00509
	4.69	5.97					7.95				34	01801-00511
	5.71	6.99					8.97				31	01801-00513
	6.73	8.00					9.98				26	01801-00515
	7.75	9.02					11.00				24	01801-00517
4.8 (3/16")	1.65	3.30	4.85	4.93	9.4	1.17	5.39	4.77	1.5	2.7	46	01801-00606
	2.03	3.94					6.10				42	01801-00607
	3.68	5.21					7.37				35	01801-00609
	4.95	6.48					8.64				31	01801-00611
	6.22	7.75					9.91				27	01801-00613
	7.49	9.02					11.18				24	01801-00615
	8.76	10.29					12.45				22	01801-00617
	10.03	11.56					13.46				20	01801-00619
6.0	2.66	3.94	5.94	6.02	11.3	1.35	6.93	5.93	1.6	3.2	37	01801-06007
	3.68	4.95					7.94				33	01801-06009
	4.70	5.96					8.96				29	01801-06011
	5.71	6.98					9.98				26	01801-06013
	6.73	7.99					10.99				24	01801-06015
	7.74	9.01					12.00				23	01801-06017

all dimensions in mm / en millimètres / alle Maße in mm / in millimetri / en milímetros

1) typical values / valeurs moyennes / typische Werte / Valori tipici / resistencias máximas recomendadas